



## **Stock Research Report**

Stock Name: TILRAY INC (TLRY)

[www.teambiddles.com](http://www.teambiddles.com)

April 11, 2020

## Profile

Tilray Inc is engaged in pharmaceutical sector. The Company is a supplier of cannabis products to pharmaceutical distributors. The Company is focused on medical cannabis research, cultivation, processing and distribution of cannabis products worldwide. Through its subsidiary, FHF Holdings Ltd (Manitoba Harvest) manufactures, markets and distributes hemp-based consumer products. The portfolio of Manitoba Harvest includes Hemp Hearts, Hemp Oil, Hemp Yeah! granola, Hemp Yeah! protein powder and Hemp Bliss milk. It also supplies cannabis products to patients in a number of countries spanning five continents through its subsidiaries in Australia, Canada and Germany and it produces medical cannabis in Canada and Europe.

### TILRAY INC

Process Industries: Agricultural  
Commodities/Milling

37

**6.78** -0.20 (-2.87%)

● market closed

6.51 Day's Range 7.47

2.43 52wk Range 57.45

SELL Technical analysis BUY

### PERFORMANCE

5 Day	11.15%
1 Month	13.95%
3 Month	-57.17%
YTD	-60.42%
1 Year	-87.33%

1 Month



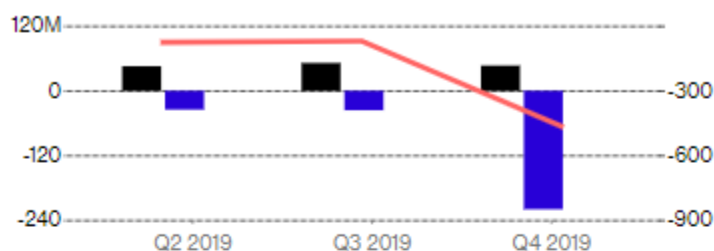
## Fundamental

For the fiscal year ended 31 December 2019, Tilray Inc revenues increased from \$43.1M to \$167M. Net loss increased from \$67.7M to \$321.2M. Revenues reflect Dried cannabis segment increase from \$21.7M to \$82.8M, Cannabis oils segment increase of 14% to \$24.1M, Canada (Country) segment increase from \$40.2M to \$130.3M, other countries segment increase from \$2.9M to \$13.2M.

### Income Statement

Quarterly Annual

Q4 2019 (Millions USD)

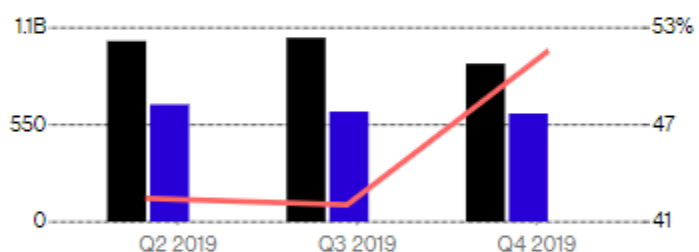


● Revenue	46.94
● Net Income	-219.15
● Profit Margin	-466.91%

### Balance Sheet

Quarterly Annual

Q4 2019 (Millions USD)



● Total Assets	896.33
● Total Liabilities	611.06
● Debt to Assets	51.55%

### Cash Flow

Quarterly Annual

Q4 2019 (Millions USD)



● Operating	-90.81
● Investing	11.66
● Financing	75.78

TLRY PEERS - SELECT UP TO 4 PEERS TO COMPARE IN CHART

Top 5 Industry Peers ▼

Company Name/Symbol ^	Current Consensus Recommendation	Price	Today's Change		Market Cap	P/E	5 Yr EPS Growth
<input checked="" type="checkbox"/> Tilray Inc TLRY	<div><div></div><div>HOLD</div><div></div></div>	\$6.78	↓ 0.20	-2.87%	705.5M	--x	--
<input type="checkbox"/> Core-Mark Holding Company Inc CORE	<div><div></div><div>BUY</div><div></div></div>	\$29.64	↑ 1.38	+4.88%	1.3B	16.8x	+7.37%
<input type="checkbox"/> Pyxus International Inc PYX	<div><div></div><div>NO OPINION</div><div></div></div>	\$2.82	↑ 0.30	+11.90%	28.1M	--x	-34.17%
<input type="checkbox"/> Rock Creek Pharmaceuticals Inc RCPIQ	<div><div></div><div>NO OPINION</div><div></div></div>	\$0.000	↓ 0.00	-33.33%	68.2K	--x	--
<input type="checkbox"/> Turning Point Brands Inc TPB	<div><div></div><div>BUY</div><div></div></div>	\$21.94	↑ 1.46	+7.13%	431.8M	11.5x	+29.16%
<input type="checkbox"/> Vector Group LTD VGR	<div><div></div><div>HOLD</div><div></div></div>	\$10.46	↑ 0.83	+8.62%	1.5B	19.7x	+5.47%

# Technical

(Setups, Buy Points, & Ideas)

## Elliot Wave Count and Oscillator

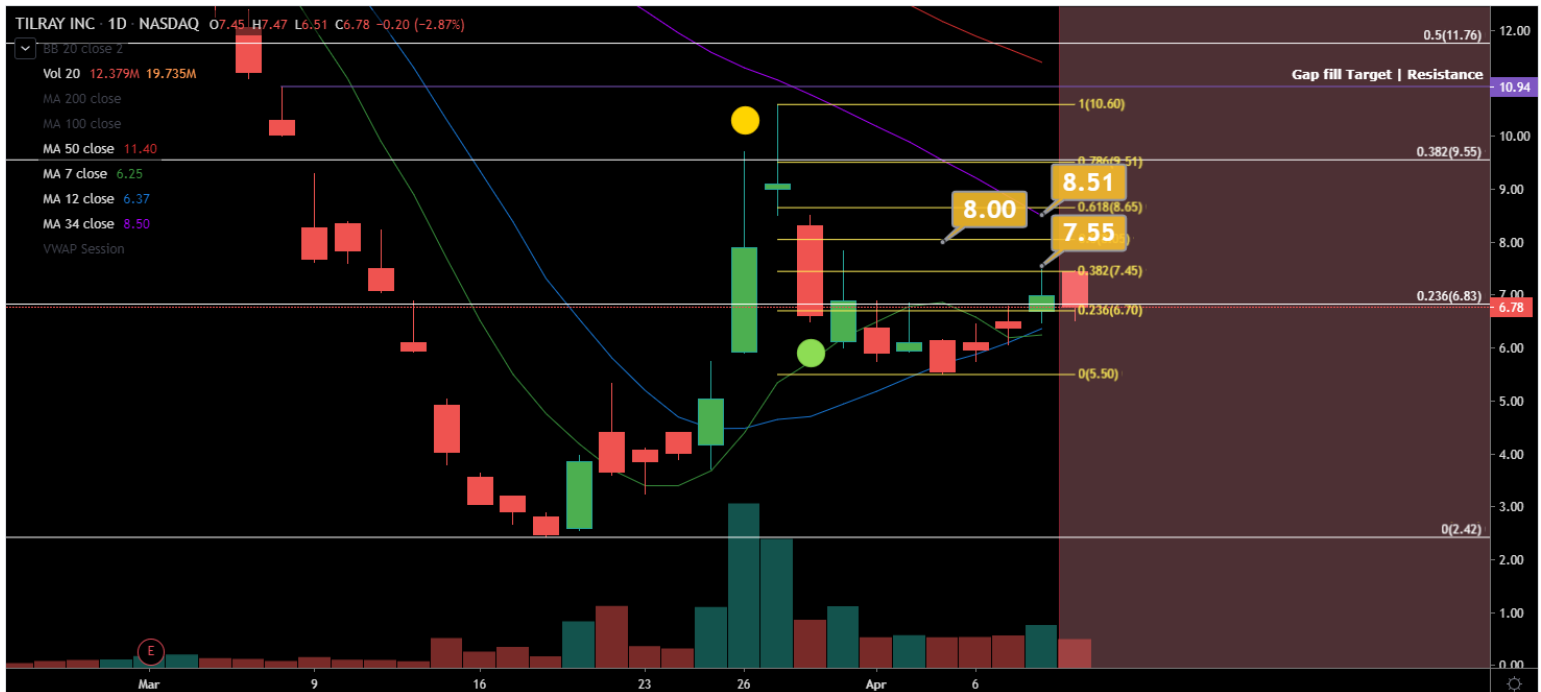
No Entry Detected – Wave is at 0, waiting for 1<sup>st</sup> wave confirmation



## Investment Circle Trader Ideas



ZM vs. TLRY – Short ZM and Long TLRY seems the way to go Trader JoE



MA Support, may be forming a bottom, volatility decreasing, dropping 34MA Major Resistance @ 8.51

Bullish/Long \$8.00 Target Short Term – Trader BullishCharts



Bullish Bottom Forming, above \$7 could run to \$8 quite fast – Trader PennyStock101





TLRY up because it is a cup & handle pattern and it just looks so perfect. It matches the .618 retrace and it is amazing how it looks to fit so perfectly. We closed literally at the fib. Wow! This matches the fib level of the cup & handle , handle I linked. You can see how we are in a channel and that we are going to target 1 around 11.23, which would be around the 300 sma on the chart. You can also see how the dotted line perfectly lies within all of this (target 1) and then target 2 as I learned is the length of the depth of the cup and still within the channel. I drew three grey lines that are just relative resistances from the overall bearish trend . It is amazing how the second target matches the yellow follow through that is a copy of the prior days move. Great news just came about providing 40b in liquidity to cannabis sector in Canada! Also, it is so amazing how it looks how it is going to break out and have a nice retrace to test the prior huge bearish channel – Trader ChargingBull



## Candlestick Patterns

[Customize](#)

Pattern	Timeframe	Reliability	Candles Ago	Candle Time
Emerging Patterns				
 Bullish doji Star	1M	★★★	Current	
 Three Outside Up	30	★★★★	Current	
Completed Patterns				
 Bullish Engulfing	30	★★★	1	Apr 09, 2020 03:00PM
 Harami Cross	1M	★★★	3	Jan 20
 Morning Doji Star	1W	★★★★	3	Mar 22, 2020
 Downside Gap Three Methods	15	★★★	3	Apr 09, 2020 03:00PM
 Bullish Engulfing	15	★★★	3	Apr 09, 2020 03:00PM
 Bullish doji Star	1W	★★★	4	Mar 15, 2020
 Harami Cross	1D	★★★	5	Apr 02, 2020
 Inverted Hammer	15	★★★	5	Apr 09, 2020 02:30PM
 Belt Hold Bearish	5H	★★★	6	Apr 07, 2020 05:00AM
 Belt Hold Bearish	1H	★★★	6	Apr 09, 2020 09:00AM
 Bullish doji Star	1M	★★★	7	Sep 19
 Falling Three Methods	1W	★★★★	7	Feb 23, 2020
 Harami Cross	1H	★★★	8	Apr 08, 2020 02:00PM
 Harami Cross	30	★★★	8	Apr 09, 2020 11:30AM
 Advance Block Bearish	15	★★★	8	Apr 09, 2020 01:45PM
 Three Black Crows	1W	★★★★	10	Feb 02, 2020
 Harami Cross	30	★★★	11	Apr 09, 2020 10:00AM
 Belt Hold Bearish	30	★★★	12	Apr 09, 2020 09:30AM
 Bullish Engulfing	1W	★★★	13	Jan 12, 2020
 Three Inside Up	1H	★★★★	13	Apr 08, 2020 09:00AM
 Harami Cross	1H	★★★	14	Apr 07, 2020 03:00PM
 Bullish doji Star	1W	★★★	15	Dec 29, 2019
 Engulfing Bearish	1H	★★★	15	Apr 07, 2020 02:00PM
 Upside Gap Three Methods	1H	★★★	15	Apr 07, 2020 02:00PM
 Dark Cloud Cover	15	★★★★	16	Apr 09, 2020 11:45AM
 Bullish Engulfing	15	★★★	17	Apr 09, 2020 11:30AM
 Bullish Engulfing	30	★★★	18	Apr 08, 2020 01:00PM
 Harami Cross	30	★★★	19	Apr 08, 2020 12:30PM
 Inverted Hammer	1D	★★★	20	Mar 12, 2020

## Highlights

- Not ranked among its peers ODC is ranked 1<sup>st</sup> in the group
- Relative Strength (RS) is 1 out of 10
- Earnings Per Share (EPS) 1 out of 10
- Accumulation / Distribution is 8 out of 10
- Purchase at support \$5.37, Resistance at \$7.67 or \$7.00 move could push stock to \$8 or higher possibly to \$10 per analyst forecasts.

## Exits

- Place trailing stop loss order, take profits at 5% is recommended, but ride the stock price up
- Place a stop limit order, and ensure intraday price trading range is large enough so you don't get priced out of the stock
- Stop Loss at 7% below entry is recommended as risk strategy to preserve capital

## Weekly

### Pivot Points »

Apr 11, 2020 01:05AM GMT

Name	S3	S2	S1	Pivot Points	R1	R2	R3
Classic	1.52	3.51	4.53	6.52	7.54	9.53	10.55
Fibonacci	3.51	4.66	5.37	6.52	7.67	8.38	9.53
Camarilla	4.71	4.99	5.26	6.52	5.82	6.09	6.37
Woodie's	1.02	3.26	4.03	6.27	7.04	9.28	10.05
DeMark's	-	-	4.01	6.26	7.03	-	-



## OSCILLATORS

Name	Value	Action
Relative Strength Index (14)	46.55	Neutral
Stochastic %K (14, 3, 3)	3.94	Neutral
Commodity Channel Index (20)	-92.26	Neutral
Average Directional Index (14)	—	—
Awesome Oscillator	—	—
Momentum (10)	-39.78	Buy
MACD Level (12, 26)	—	—
Stochastic RSI Fast (3, 3, 14, 14)	—	—
Williams Percent Range (14)	-94.59	Buy
Bull Bear Power	—	—
Ultimate Oscillator (7, 14, 28)	—	—

## MOVING AVERAGES

Name	Value	Action
Exponential Moving Average (5)	12.42	Sell
Simple Moving Average (5)	12.55	Sell
Exponential Moving Average (10)	21.85	Sell
Simple Moving Average (10)	19.61	Sell
Exponential Moving Average (20)	43.99	Sell
Simple Moving Average (20)	48.54	Sell
Exponential Moving Average (30)	—	—
Simple Moving Average (30)	—	—
Exponential Moving Average (50)	—	—
Simple Moving Average (50)	—	—
Exponential Moving Average (100)	—	—
Simple Moving Average (100)	—	—
Exponential Moving Average (200)	—	—
Simple Moving Average (200)	—	—
Ichimoku Cloud Base Line (9, 26, 52, 26)	—	—
Volume Weighted Moving Average (20)	56.78	Sell
Hull Moving Average (9)	7.07	Sell

## TLRY Historical Data



Time Frame:

Daily ▼



Download Data

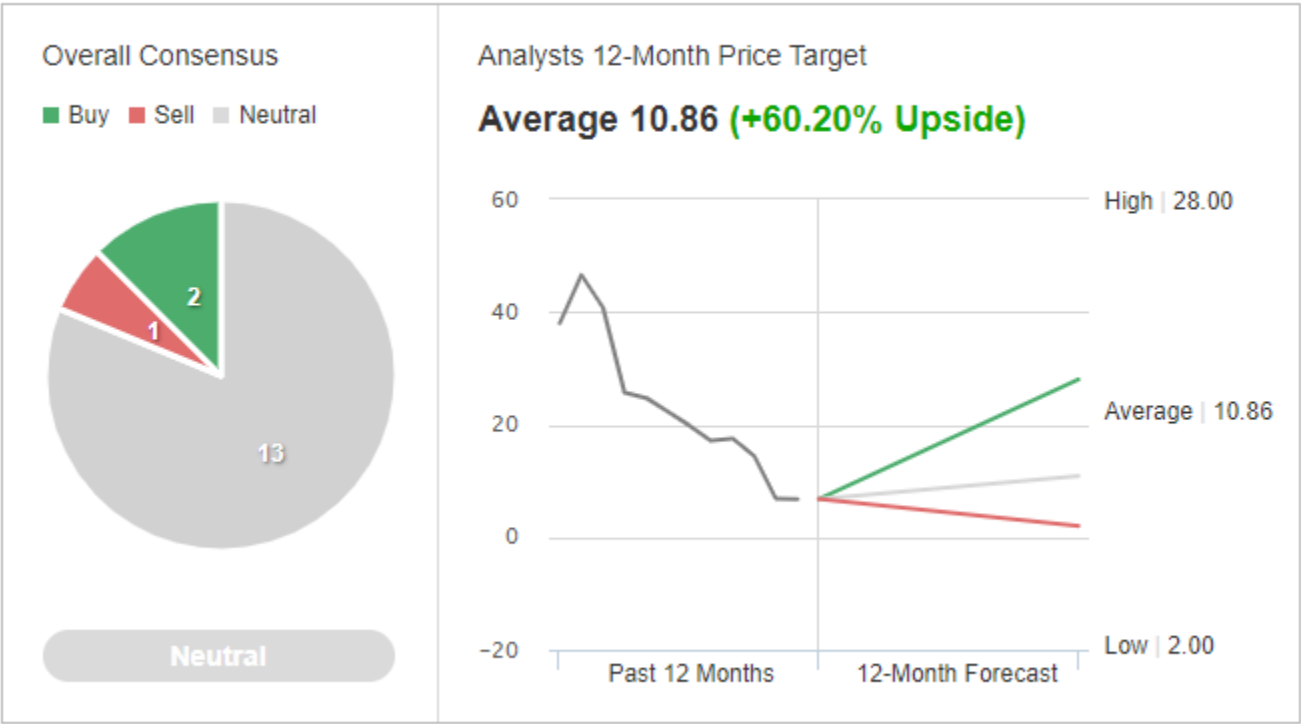
03/12/2020 - 04/12/2020



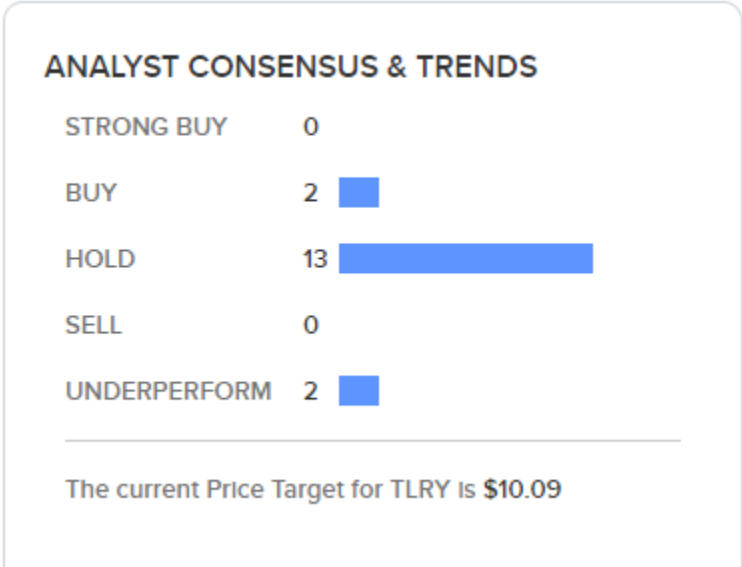
Date ↕	Price ↕	Open ↕	High ↕	Low ↕	Vol. ↕	Change % ↕
Apr 09, 2020	6.78	7.47	7.47	6.51	12.38M	-2.87%
Apr 08, 2020	6.98	6.68	7.55	6.60	18.34M	9.58%
Apr 07, 2020	6.37	6.47	6.80	6.07	13.91M	6.88%
Apr 06, 2020	5.96	6.08	6.45	5.76	13.17M	7.58%
Apr 03, 2020	5.54	6.12	6.14	5.50	13.15M	-9.18%
Apr 02, 2020	6.10	6.05	6.85	5.92	13.98M	3.39%
Apr 01, 2020	5.90	6.48	6.84	5.75	13.07M	-14.24%
Mar 31, 2020	6.88	6.04	7.84	6.00	26.46M	4.08%
Mar 30, 2020	6.61	8.31	8.51	6.50	20.63M	-27.36%
Mar 27, 2020	9.10	8.88	10.49	8.50	55.33M	15.19%
Mar 26, 2020	7.90	5.95	9.66	5.91	70.60M	56.75%
Mar 25, 2020	5.04	4.17	5.73	3.73	26.07M	25.37%
Mar 24, 2020	4.02	4.39	4.40	3.90	8.24M	4.42%
Mar 23, 2020	3.85	4.07	4.10	3.25	9.25M	5.48%
Mar 20, 2020	3.65	4.40	5.33	3.60	26.55M	-5.19%
Mar 19, 2020	3.85	2.60	3.98	2.55	19.89M	55.87%
Mar 18, 2020	2.47	2.78	2.89	2.43	4.96M	-14.83%
Mar 17, 2020	2.90	3.20	3.20	2.68	9.01M	-4.92%
Mar 16, 2020	3.05	3.55	3.64	3.04	6.98M	-24.32%
Mar 13, 2020	4.03	4.92	5.03	3.80	12.74M	-32.27%
Mar 12, 2020	5.95	6.10	6.89	5.93	2.80M	-16.08%
Highest: 10.49	Lowest: 2.43	Difference: 8.06		Average: 5.38		Change %: -4.37

# Wall Street

## TLRY Consensus Estimates



Data Based on a Poll of 16 Analysts



## Latest News

[Are Marijuana Stocks & ETFs Coronavirus-Proof?](#)

[6 Stocks To Watch: AIR, BLPH, CROX, JBLU, PENN, TLRY](#)

[Spikes In Cannabis Sales During COVID-19 Crisis Boosting Pot Stocks](#)

[HSBC, CTL among premarket losers 1 Apr 2020 - Seeking Alpha](#)

[Plans for NY legal pot up in smoke 1 Apr 2020 - Seeking Alpha](#)

[AMRN, CCL among premarket losers 31 Mar 2020 - Seeking Alpha](#)

[Pot stocks sidestep broad market selloff 27 Mar 2020 - Seeking Alpha](#)

[TLRY, HEXO among premarket gainers 27 Mar 2020 - Seeking Alpha](#)

## Complaints, Reviews, & Major Litigation

[RM LAW Announces Class Action Lawsuit Against Tilray, Inc.](#)

[Tilray Sued for \\$300M Over Alleged Illegal Acquisition Scheme](#)

[Tilray Stock - Tilray, Inc. Class Action Lawsuit - Kehoe Law ...](#)

[Tilray Slapped With \\$150 Million Lawsuit Over Alleged Plot to ...](#)

[TLRY INVESTOR FILING DEADLINE: Bernstein Liebhard LLP ...](#)